

FIRST BORN CROCHET PONCHO

MEASUREMENTS

One size fits most

Actual size (at widest point) 120cm

Length 60cm

MATERIALS

CLECKHEATON WOOL MOHAIR 12 PLY 50g balls

Stone (colour 0003) 9

Black (colour 0001) 2

Cream (colour 0009) 3

Grey (colour 0004) 3

Use only the yarn specified. Other yarns are likely to produce different results.

Quantities are approximate as they can vary between crochet workers. Check the ball bands to ensure all yarn is from the same dye lot.

- 6.50mm (UK 3) and 10mm (UK 000) crochet hooks or size needed to give correct tension.
- wool needle for sewing seams.

TENSION

Basic Motif (see below) measures 19cm across, using 6.50mm crochet hook.

Check your tension carefully.

If motif is smaller than 19cm use a larger hook, if motif is bigger use a smaller hook.

ABBREVIATIONS

beg = beginning; **ch** = chain; **dc** = double crochet; **dtr** = double treble; **fol** = following; **htr** = half treble; **lp/s** = loop/s; **rem** = remaining; **rep** = repeat; **sl st** = slip stitch; **sp/s** = space/s; **st/s** = stitch/es; **tr** = treble; **yoh** = yarn over hook.

Group = (1tr, 1ch, 1tr) in next sp or st.

Dec = * yoh, draw up a lp in next st, yoh and draw through 2 lps, rep from * in next st, yoh and draw through all 3 lps on hook.

BASIC MOTIF

Make a total of 20 Basic Motifs in foll colourways –

Make 2 using **Black**, then **Stone, Grey, Stone** and **Cream**.

Make 2 using **Stone**, then **Cream, Black, Cream** and **Grey**.

Make 2 using **Cream**, then **Black, Grey, Stone** and **Cream**.

Make 2 using **Black**, then **Grey, Cream, Stone** and **Grey**.

Make 2 using **Black**, then **Cream, Stone, Grey** and **Black**.

Make 2 using **Grey**, then **Black, Grey, Stone** and **Cream**.

Make 4 using **Stone**, then **Grey, Cream, Black** and **Grey**.

Make 4 using **Cream**, then **Stone, Black, Cream** and **Stone**.

Using 6.50mm hook and selected colour, make 6ch and join with a sl st to form a ring.

1st round – 6ch, (**Group** in ring, 3ch) 3 times, 1tr in ring, 1ch, sl st in 3rd of 6ch at beg. Fasten off.

Join next colour with a sl st in any 3ch sp.

2nd round – 4ch, (1tr, 3ch, **Group**) in same 3ch sp, 2ch, * (**Group**, 3ch, **Group**) in next 3ch sp, 2ch, rep from * to end, sl st in 3rd of 4ch at beg. Fasten off.

Join next colour with a sl st in any corner 3ch sp.



 Intermediate

3rd round – 4ch, (1tr, 3ch, **Group**) in same 3ch sp, 2ch, **Group** in next 2ch sp, 2ch, * (**Group**, 3ch, **Group**) in next 3ch sp, 2ch, **Group** in next 2ch sp, 2ch, rep from * to end, sl st in 3rd of 4ch at beg. Fasten off.

Join next colour with a sl st in any corner 3ch sp.

4th round – 4ch, (1tr, 3ch, **Group**) in same 3ch sp, 2ch, (**Group** in next 2ch sp, 2ch) twice, * (**Group**, 3ch, **Group**) in next 3ch sp, 2ch, (**Group** in next 2ch sp, 2ch) twice, rep from * to end, sl st in 3rd of 4ch at beg. Fasten off.

Join next colour with a sl st in any corner 3ch sp.

5th round – 4ch, (1tr, 3ch, **Group**) in same 3ch sp, 2ch, (**Group** in next 2ch sp, 2ch) 3 times, * (**Group**, 3ch, **Group**) in next 3ch sp, 2ch, (**Group** in next 2ch sp, 2ch) 3 times, rep from * to end, sl st in 3rd of 4ch at beg. Fasten off.

HALF MOTIF

Make a total of 4 Half Motifs in foll colourways –

Make 2 using **Stone**, then **Black, Cream, Grey** and **Cream**.

Make 2 using **Cream**, then **Grey, Black, Cream** and **Stone**.

Using 6.50mm hook and selected colour, make 4ch and join with a sl st to form a ring.

1st row – 5ch, (**Group**, 3ch, **Group**, 1ch, 1dtr) in ring. Fasten off.

With right side facing, join next colour with a sl st in 4th of 5ch at beg of last row.

2nd row – 5ch, **Group** in turning ch lp, 2ch, (**Group**, 3ch, **Group**) in next 3ch sp, 2ch, **Group** in last 1ch sp, 1ch, 1dtr in next dtr. Fasten off.

With right side facing, join next colour with a sl st in 4th of 5ch at beg of last row.

3rd row – 5ch, **Group** in turning ch lp, 2ch, **Group** in next 2ch sp, 2ch, (**Group**, 3ch, **Group**) in next 3ch sp, 2ch, **Group** in next 2ch sp, 2ch, **Group** in last 1ch sp, 1ch, 1dtr in next dtr. Fasten off.

With right side facing, join next colour with a sl st in 4th of 5ch at beg of last row.

4th row – 5ch, **Group** in turning ch lp, 2ch, (**Group** in next 2ch sp, 2ch, miss 1ch sp) twice, (**Group**, 3ch, **Group**) in next 3ch sp, 2ch, (**Group** in next 2ch sp, 2ch, miss 1ch sp) twice, **Group** in last 1ch sp, 1ch, 1dtr in next dtr. Fasten off.

With right side facing, join next colour with a sl st in 4th of 5ch at beg of last row.

5th row – 5ch, **Group** in turning ch lp, 2ch, (**Group** in next 2ch sp, 2ch, miss 1ch sp) 3 times, (**Group**, 3ch, **Group**) in next 3ch sp, 2ch, (**Group** in next 2ch sp, 2ch, miss 1ch sp) 3 times, **Group** in last 1ch sp, 1ch, 1dtr in next dtr. Fasten off.

CENTRE PANEL

NOTE – We recommend using running stitch seam worked through single loops to sew up your poncho.

Following assembly diagram, join motifs to form Strips 1 and 2 ... 4 strips in all.

With right side facing, using 10mm hook and **Stone** and working into 1ch and 2ch sps, work 1 row tr evenly across long edges only of Strips 1 and 2. Fasten off.

Sew each Strip 1 to each Strip 2 to form centre front/back seams.

Join centre panels together along one short edge (shoulder seams), leaving centre 24cm unsewn for neck opening.

****** With right side facing, using 10mm hook and **Stone** and working into 1ch and 2ch sps, work 1 row tr evenly along one long edge of joined panels. Cont in treble fabric for 10cm from edge of motifs. Fasten off. ******

Rep from ****** to ****** along other long edge of joined panels.

POLO COLLAR

With right side facing, using 10mm hook and **Stone**, beg at shoulder seam, work 36dc evenly around neck edge (working into 1ch and 2ch sps), DO NOT join with a sl st.

NOTE – Polo collar is worked in a spiral.

Next round – 1ch, 1dc in each of next 2dc, 1htr in each of next 2dc, 1tr in each of next 32dc.

Next round – 1tr in each of next 36 sts.

Rep last round until polo collar measures 24cm from beg, 1htr in each of next 2tr, 1dc in each of next 2tr, sl st in each of next 2tr. Fasten off.

SIDE PANELS

Following diagram, join rem motifs and half motifs to form 2 side strips.

******* With right side facing, using 10mm hook and **Stone** and working into 1ch and 2ch sps, work 1 row tr evenly along short edge of one side strip.

Next row – 3ch, **Dec**, 1tr in each tr to last 3 sts, **Dec**, 1tr in top of turning ch.

Rep last row 3 times. Fasten off. *******

Rep from ******* to ******* on short edge on other side strip.

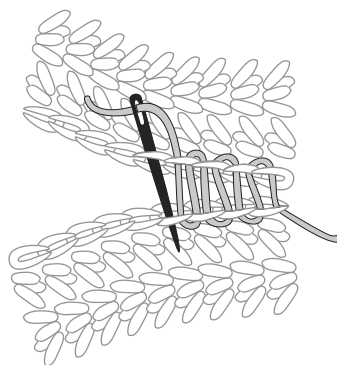
TO MAKE UP

DO NOT PRESS. Sew long edge of each side strip to each side of centre panels.

With right side facing, using 6.50mm hook and **Stone**, work 1 round dc evenly around all outside edges of poncho working extra dc in each corner, sl st in first dc. Fasten off.

RUNNING STITCH SEAM (SINGLE LOOPS)

Working through single loops



Cleckheaton

Level 7
409 St Kilda Road
MELBOURNE VICTORIA 3004
A.B.N 85 055 366 590

T +61 3 9380 3888
F +61 3 9820 0989
www.cleckheaton.com.au

 /auspinners



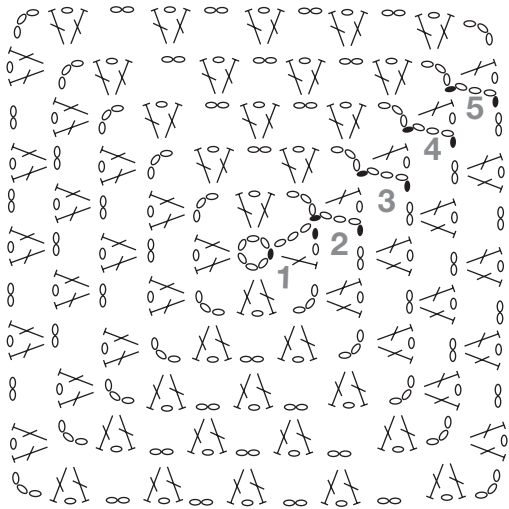
hotline

For Australian residents – If you need help with your pattern, and are using the recommended Cleckheaton yarn, please phone 03 9380 3888 or Toll Free 1800 337 032, (9am to 4pm Mon – Fri E.S.T.).

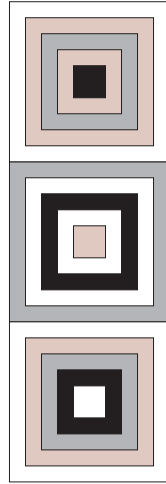
If you live outside Australia please see our postal address and website opposite.

This publication is protected by copyright. Reproduction in any form (including photocopying) without prior permission from Australian Country Spinners will lead to proceedings being brought to restrain any infringement. The only exception is photocopying to enlarge graphs and written instructions for graphs. We have made every effort to ensure that these instructions are accurate and complete. We cannot however be responsible for variations in individual work, human error, typographical mistakes or if yarn other than the recommended CLECKHEATON yarn is used.

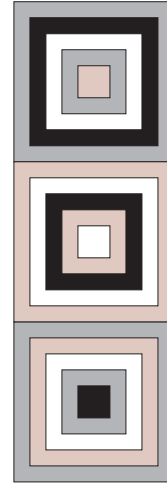
BASIC MOTIF



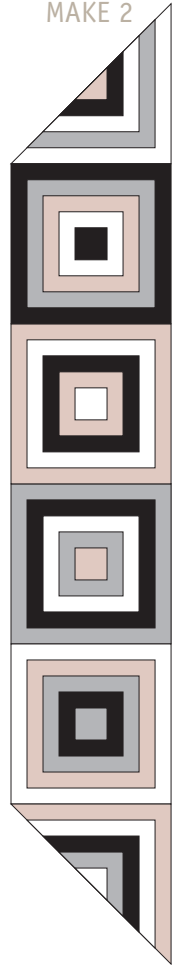
STRIP 1 MAKE 2



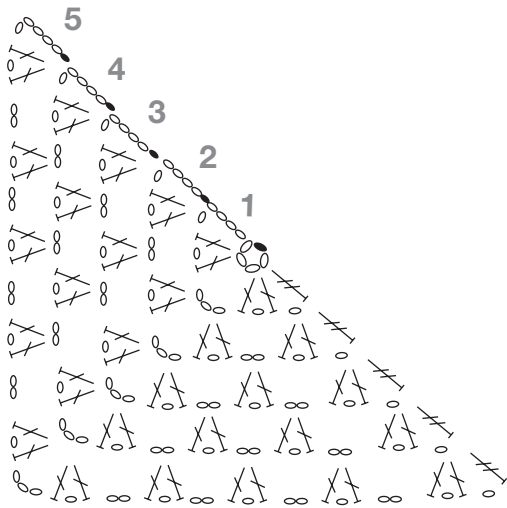
STRIP 2 MAKE 2



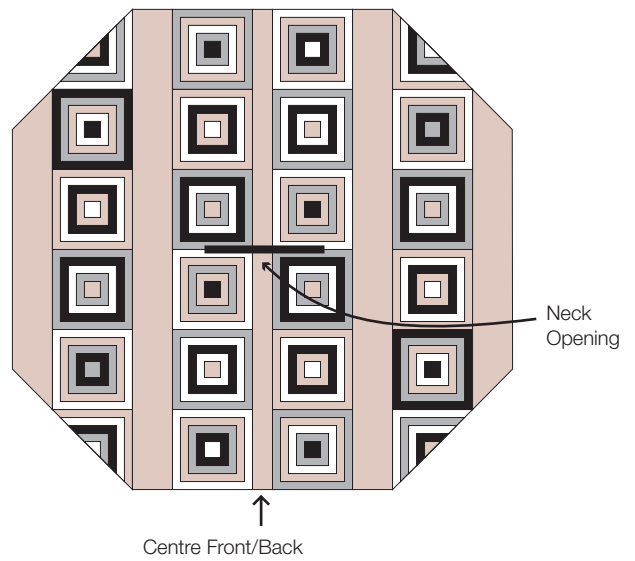
SIDE STRIP MAKE 2



HALF MOTIF



PONCHO ASSEMBLY DIAGRAM



KEY

- = chain (ch)
- = slip stitch (sl st)
- ∟ = treble (tr)
- ∟∟ = double treble (dtr)
- (tan) = stone
- (black) = black
- (white) = cream
- (grey) = grey